

MONTHLY MEMBERSHIP PROGRESS REPORT

LOCATION NEW YORK

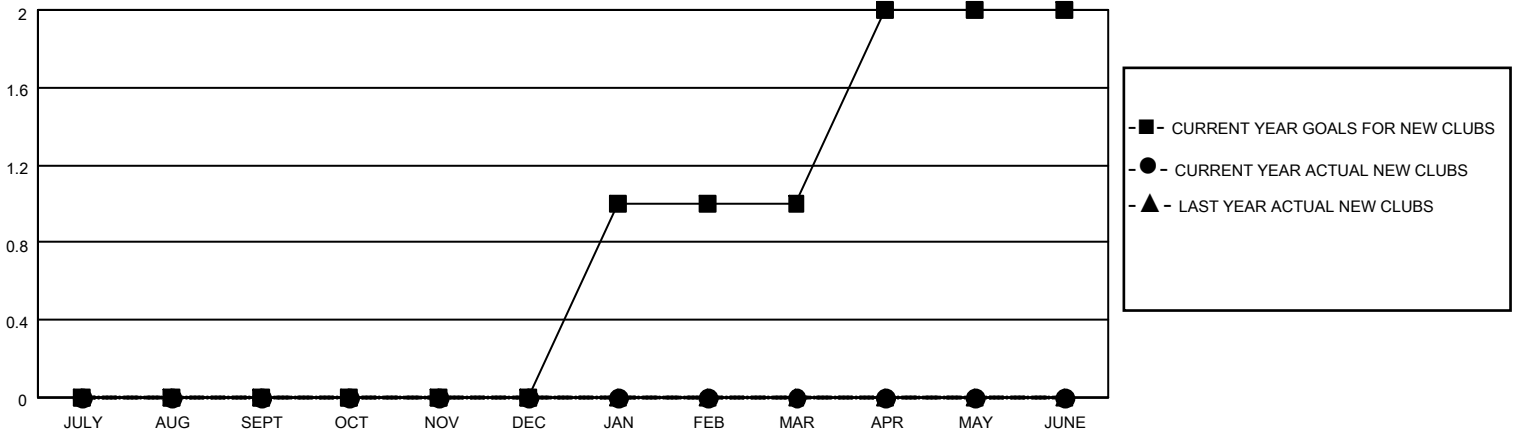
District 20 W

Results as of: 4/30/2023

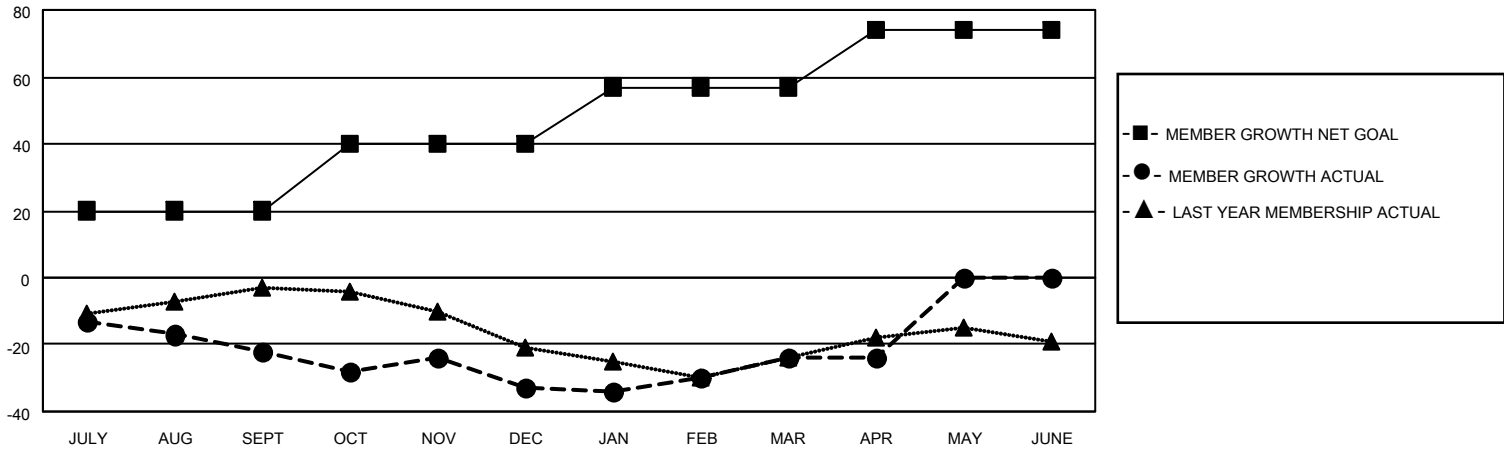
Clubs			
RESULTS FOR 2022-2023			
QUARTER	NEW CLUB GOAL	NEW CLUBS	DROPPED CLUBS
JULY/AUG/SEPT	0	0	0
OCT/NOV/DEC	0	0	1
JAN/FEB/MAR	1	0	0
APR/MAY/JUNE	1	0	0

Members			
RESULTS FOR 2022-2023			
QUARTER	MEMBER GROWTH NET GOAL	MEMBER GROWTH ACTUAL	DROPPED MEMBERS ACTUAL (including transfers)
JULY/AUG/SEPT	20	14	36
OCT/NOV/DEC	20	27	35
JAN/FEB/MAR	17	34	23
APR/MAY/JUNE	17	6	5

GOALS AND ACTUAL NEW CLUBS CUMULATIVE



GOALS AND ACTUAL MEMBERS CUMULATIVE



DROPPED CLUBS: 1

28 CLUBS OF 50 ADDED 1 OR MORE NEW MEMBERS

GENDER DISTRIBUTION

MALE	834 (64.55%)
FEMALE	458 (35.45%)
NON BINARY	0 (0.00%)
PREFER NOT TO ANSWER	0 (0.00%)

DROPPED MEMBERS

[CLICK HERE FOR CUMULATIVE MEMBERSHIP DATA](#)

DECEASED	19
CLUB CANCELLED	1
OTHER	79
TOTAL	99

TOTAL FAMILY UNIT MEMBERS	311
FAMILY MEMBERS PAYING HALF DUES	159